

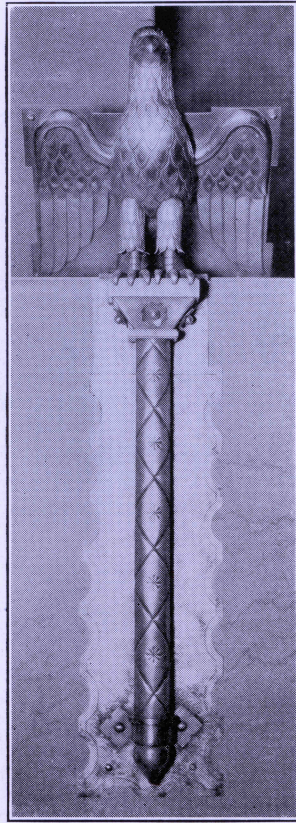
*Statue of Bl. Virgin Mary  
(Side Altar)*



*Statue of St. Joseph  
Side Altar*

*These statues, as well as the statue of St. Clement over the Main Altar and that of the Sacred Heart on a beautiful pedestal in the eastern transept, were carved from wood at Oberammergau and decorated in the studios of the Rambusch Decorating Co. to conform with the entire decorative scheme reminiscent of the Early Church.*



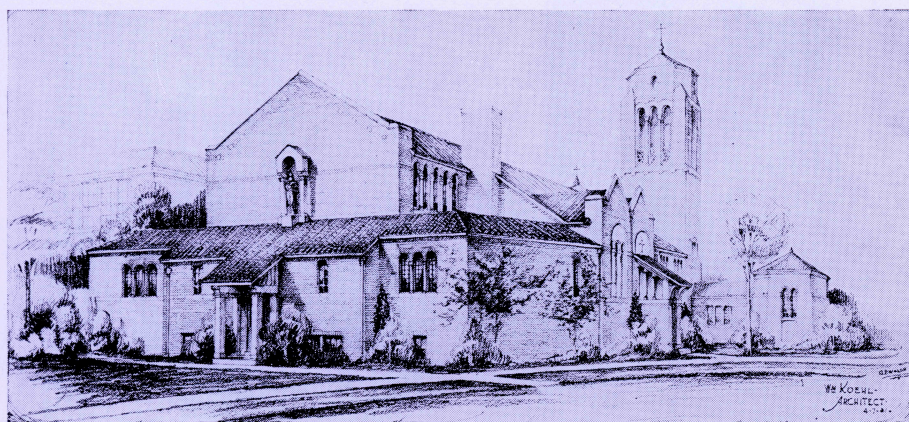


*Detail of Pulpit—  
Lectern of Wrought Bronze*



*Doors of Ambrey in Baptistry*





*Rear View of Church*

Rev. Joseph J. Schmit, Pastor

Assistants

Rev. John J. Tivenan

Rev. John J. Reynolds



## *Acknowledgment*



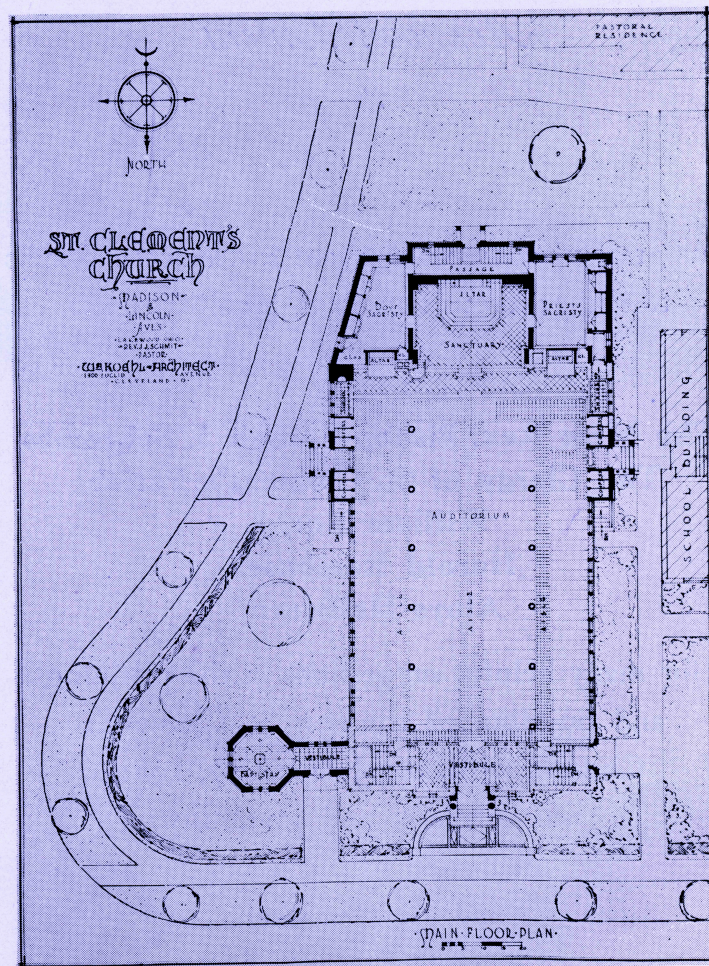
Our grateful acknowledgment and sincere thanks  
to the generous donors of memorial gifts  
and to

The Most Rev. Bishop Joseph J. Schrembs  
The Clergy of St. Clement's Parish  
William Koehl  
Harold Rambusch  
Aloys Hellstern

for many helpful suggestions in the planning  
and building of the new St. Clement's  
Church, which on January 17, 1932,  
was formally and gratefully  
dedicated to the honor  
and glory of God.

*The Pastor*





*Ground Plot of Church*